



INDIVIDUAL AND ECOLOGICAL LOG HOUSES

Natural Collection





Pleasing to the eye, its spacious terrace surrounds the main rooms. The characteristic gable-end lets the light flood in through a curved window. The IDYLLE design is as attractive inside as it is outside.

The open-plan kitchen, dining room and lounge create a homely atmosphere and the large French windows let in lots of natural light.

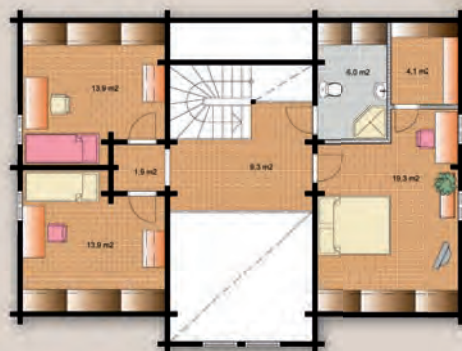
Years of happiness are guaranteed with the IDYLLE!

Total surface area: 173 m²

Ground floor: 96 m²

First floor: 77 m²

Patio: 42 m²



First floor



Ground floor





A house with a classic exterior - but an innovative layout including a generous kitchen/dining-room that opens onto a lounge with a cathedral ceiling. The great window on the first floor guarantees natural light.

With four spacious bedrooms and a fifth with its own balcony, **the CHARME house also has an area on the first floor for you to utilise as you wish.**

Total surface area: 165 m²

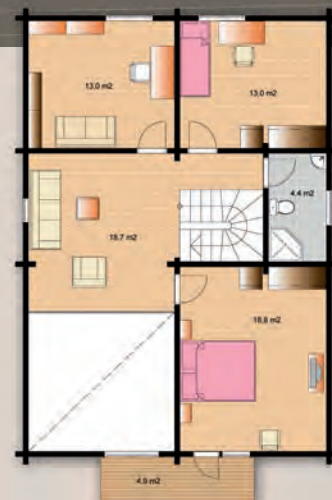
Ground floor: 92 m²

First floor: 73 m²

Balcony: 5 m²



Ground floor



First floor





The CASTEL model combines open space and functionality.

The ample 45 m² L-shaped lounge, gives you enough space to feel comfortable as well as entertain family and friends. It also makes a versatile space where you can readily create moods in the same room.

The CASTEL is typically the kind of house for real living, and one where you can easily imagine big family gatherings.

Total surface area: 168 m²

Ground floor: 94 m²

First floor: 74 m²

Patio and balcony: 23 m²



Ground floor

First floor





The first thing that strikes you when you see the **Riverbank** house is the **warm welcoming feel of** the covered deck - easy to imagine spending pleasant afternoons or evenings even when it's raining.

The large windows open up this aspect of the house, drawing the outside indoors.

The rest of the house offers cosy spaces with its numerous bedrooms and two bathrooms.

Total surface area: 156 m²

Ground floor: 76 m²

First floor: 80 m²

Patio: 13 m²



Ground floor



First floor



With its distinctive "mountain range" roof and charming little porch, the SIERRA house is particularly engaging!

The ground floor comprises a large open plan living space, surrounded by alcoves and functional rooms.

The attached garage with access from inside the house is an added bonus.

Total surface area: 202 m²

Ground floor: 103 m²

First floor: 99 m²

Patio and balcony: 9 m²



First floor



Ground floor



RIVIERA is an appealing bungalow, where everything is accessible.

The "night" part of the house has three spacious bedrooms.

The "daytime" area forms an extensive and welcoming space of 47 m². The walls are almost all glass, with tall windows that let the sunlight flood in, and a magnificent deck area where you can enjoy simply "being", outdoors in the fresh air.

Total surface area: 116 m²

Ground floor: 116 m²

Patio: 40 m²





COUNTRYSIDE, is a functional house with its own individual character: the little porches around the house lend an innovative touch to this model, designed to optimise space.

The spacious kitchen area opens directly onto the garden and the extensive lounge is bathed in natural light thanks to large windows on two walls, creating a very roomy and light atmosphere.

Total surface area: 144 m²

Ground floor: 70 m²

First floor: 74 m²

Patio: 8 m²



First floor



Ground floor





PROVENCE,
a warm southern style
for this charming little
bungalow.

The comfortable lounge, 31 m², has numerous French windows that can be thrown open to extend the room through to the partially-covered deck.

This extra room is not only a practical interior space, it adds character to the aesthetics of this enchanting house.

Total surface area: 96 m²

Ground floor: 96 m²

Patio: 23 m²



Ground floor





COASTAL, a house whose innovative architecture conjures up a mood of maritime adventure, as you look out "to sea" through the porthole window.

In addition to its fascinating look, the extensive (20 m²) first floor bedroom has the advantage of being removed from the rest of the house.

Total surface area: 103 m²

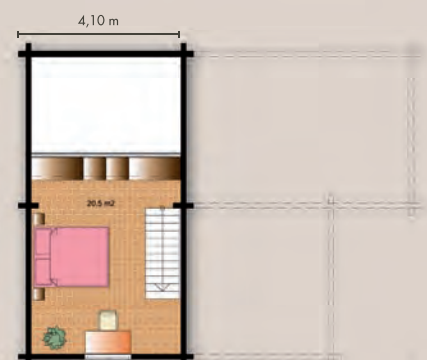
Ground floor: 73 m²

First floor: 30 m²

Patio: 8 m²



Ground floor



First floor



With its well thought-out exterior design, this compact house has a great-house feel.

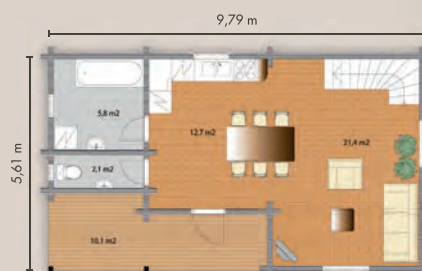
The large main room with an open-plan kitchen, and the spacious 26 m² bedroom upstairs make the COTTAGE an ideal home for small families.

Total surface area: 72 m²

Ground floor: 45 m²

First floor: 27 m²

Patio: 10 m²



Ground floor



First floor





Designed for commercial use as a café, restaurant or sports pavilion, the appeal of the COLONIAL lies in its covered veranda (54 m²), reminding us of those far-off countries where shelter from rain and drizzle - even sunshine! - may be welcome all year round.

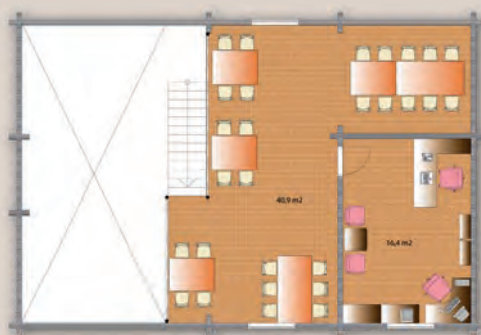
The Colonial can cater for large groups indoors or outdoors, upstairs or downstairs, and also has a utility part so that you can work comfortably in excellent conditions.

Total surface area: 156 m²

Ground floor: 96 m²

First floor: 60 m²

Patio: 54 m²



First floor



Ground floor





**CALIFORNIA,
a beautiful house with
modern architecture.**

Inward-facing for extra privacy, this interesting house is perfectly designed to incorporate an external feature such as a swimming pool or a beautiful garden.

Its L-shape divides up the house perfectly, and the appealing asymmetrical first floor, on one branch of the "L", offers great possibilities for extra accommodation.

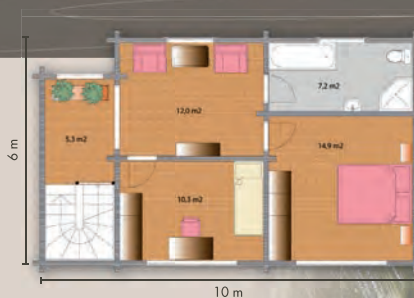
Total surface area: 200 m²

Ground floor: 146 m²

First floor: 54 m²

Patio: 34 m²

First floor



16 m



Ground floor





The wide façade divided by a centrally inset front door gives the FLORIDA a really modern look.

One side is the “night” side of the house, the other is the common living area. A very high cathedral ceiling, gives a luxurious interior, well lit by the multiple windows.

Total surface area: 118 m²

First floor: 118 m²

Patio: 33 m²





The originality of the **OCEANIC** model lies in its raised loft feature, providing an extra open space with glorious views of the surrounding environment.

Viewed from outside, this offset central section gives this splendid house a special personality.

Total surface area: 88 m²

Ground floor: 76 m²

Loft: 12 m²

Patio: 18 m²





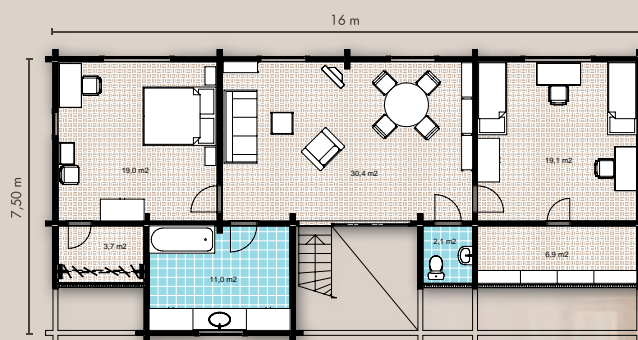
A curved roof at one side and an imposing façade on the other are the notable characteristics of the FUTURE: an original style for a well-designed, comfortable house.

Upstairs, the high-ceilinged bathroom and two spacious bedrooms are well lit by natural light from the wide windows.

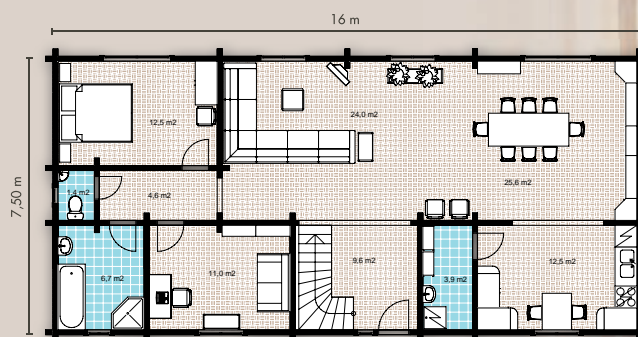
Total surface area: 229 m²

Ground floor: 120 m²

First floor: 109 m²



First floor



Ground floor



Your house made to measure!

In addition to the models featured
in our catalogues we also
manufacture made-to-measure
houses, based on your own plans.

Here are just a few examples
of some of your creations...

